

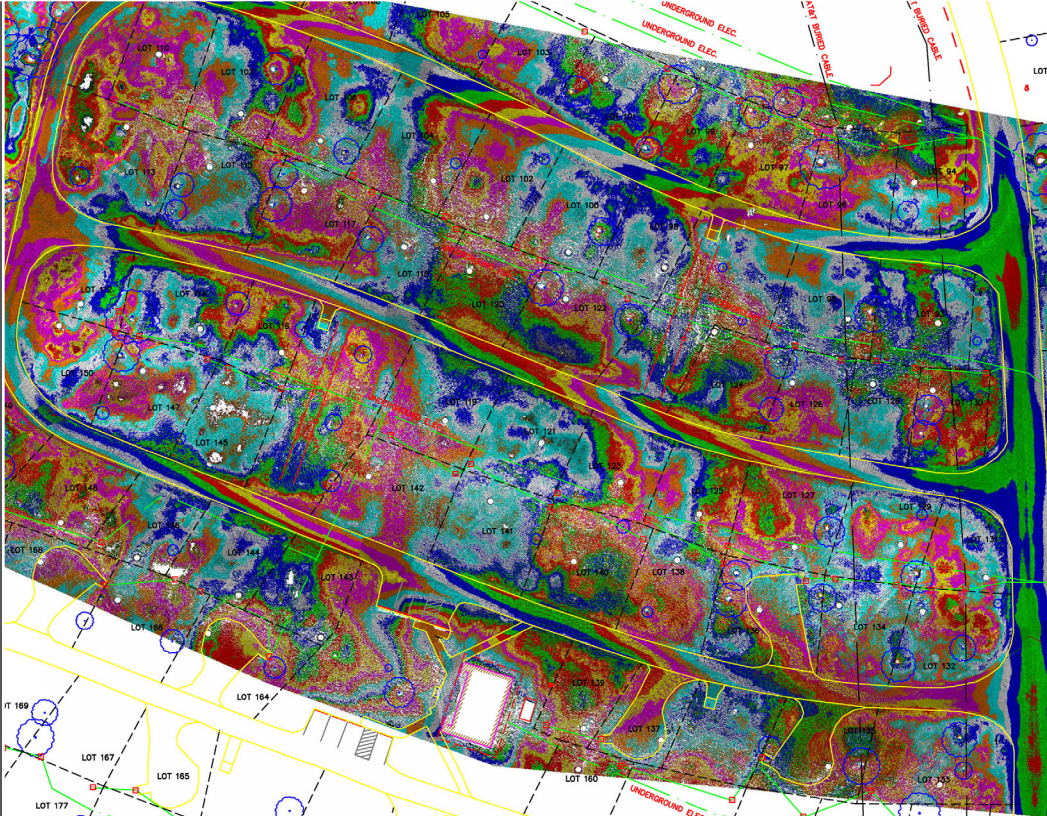
2026 EMINENT CONCEPTOR AWARD WINNER
ENGINEERING

LARGE-DIAMETER SEWER REHAB - A LINER PILOT STUDY
NTH CONSULTANTS



2026 EMINENT CONCEPTOR AWARD WINNER
SURVEYING

ALOHA STATE PARK LIDAR SURVEY AND STUDY
NOWAK & FRAUS ENGINEERS



AMERICAN COUNCIL OF ENGINEERING COMPANIES
of Michigan

2027
ENGINEERING
AND SURVEYING
EXCELLENCE
AWARDS

—
CALL FOR ENTRIES

This guide contains all specifications for your project entry.
Please refer to it before and during your submittal process.

The American Council of Engineering Companies of Michigan (ACEC/Michigan) proudly announces the 2027 Engineering and Surveying Excellence (ESE) Awards program. ACEC/Michigan guidelines are used only for Michigan entries. If an entry receives an Honorable or Eminent Conceptor award, the firm can choose to submit for a national award. If submitting for a national award, you must follow the ACEC guidelines, as they differ from Michigan.



KEY DATES AND DEADLINES

NOVEMBER 1, 2024 - OCTOBER 31, 2026

AUGUST 14, 2026

SEPTEMBER 18, 2026

NOVEMBER 4, 2026

JANUARY 6, 2027

MARCH 6, 2027

PROJECT SUBSTANTIALLY COMPLETE AND READY FOR USE

INTENT TO ENTER FORMS DUE

ENTRIES DUE BY NOON

JUDGING DAY

ENTRIES DUE FOR QUALIFYING NATIONAL SUBMITTALS

AWARDS GALA | JW MARRIOTT GRAND RAPIDS, MI



ELIGIBILITY REQUIREMENTS

Any firm maintaining a Michigan office and engaged in the private practice of consulting engineering and/or surveying is eligible to enter the competition. Firms can submit projects that are located in other states, however, the firm's Michigan office must have had a leadership role in the project to be eligible.

Michigan engineering and surveying entries must meet the substantially complete and ready for use requirement between November 1, 2024 and October 31, 2026. This means the owner can use the project as intended and only minor punch list type work remains.

A project may be entered only once by the entering firm in any of the following categories. The same project may be entered in a different category by a different entering firm. However, after a project has been entered in the Studies, Research and Consulting Engineering Services category, and the project has been constructed, the project may be entered by the same firm in a different category in the year when eligible.

Studies, Research, and Consulting Engineering Services (After project is constructed, it may be entered in a different category in the eligible year.)

Building/Technology Systems

Structural Systems

Surveying and Mapping Technology (JUDGED SEPARATELY FROM ENGINEERING PROJECTS)

Environmental

Waste and Storm Water

Water Resources

Transportation

Special Projects

Energy

Industrial and Manufacturing Processes and Facilities



ENTRY FEE/INTENT TO ENTER

The entry fee is **\$500 per entry for ACEC/Michigan and MSPS members; \$1,300 for non-members**. For ACEC/Michigan membership information, visit acecmi.org. If you proceed to the national competition, you will need to pay the appropriate fee at that time.

An **Intent to Enter** must be submitted [online](#) by **August 14, 2026 with a non-refundable deposit of \$150** per entry. This deposit is applied toward the entry fee. *Note: If you are submitting multiple projects, a separate Intent to Enter must be submitted for each project.*

All entries must be submitted on ACEC/Michigan's [Awards Submittal Portal](#), project panels must be received at the ACEC/Michigan office, and entry fees paid by **noon on September 18, 2026**. Any entries received after the deadline will not be eligible.



ENTRY REQUIREMENTS

Your entry must include a project panel, electronic submittal, and remaining entry fee. Sample submittals are available at acecmi.org.

PROJECT PANEL

Panel text and photos should demonstrate the challenges, solutions, innovation, complexity and unique aspects of your project. All panels become the property of ACEC/Michigan and are displayed at the gala and other ACEC/Michigan events throughout the year to promote our local industry, professional consultants, and projects. Panel requirements include:

- 30" x 30", mounted on a **rigid, lightweight board such as gatorboard or foamcore**, not exceeding 1/4" thick with a protective finish applied.
- Project name and location, owner name and location, and entering firm's name and location must be indicated on the front of the panel in a minimum of 32-point font size.
- ACEC/Michigan logo (available for download at the [Awards Submittal Portal](#) and acecmi.org) must be included on the front of the panel at 3.5" wide.
- Maximum of six high-quality photos and/or graphics may be used. These can be different from the images used in your entry, and a background photo is not considered one of the six photographs.
- Maximum 250 words, not including captions.
- Minimum 32-point font size for text.
- Minimum 28-point font size for captions and graphics.



ENTRY REQUIREMENTS (CONTINUED)

SUBMITTAL (ELECTRONIC ONLY)

Your electronic submittal must contain the following documents in the file formats indicated on page 5. Each document must be uploaded separately through ACEC/Michigan's [Awards Submittal Portal](#).

NOTE: CLIENT/OWNER LETTER IS NO LONGER REQUIRED

OFFICIAL ENTRY FORM

Complete the entry form online, download it, and then add signatures from all required parties. Both Firm and Owner representative signatures are required. The signed entry form can then be uploaded as part of the electronic submittal. (Electronic signatures are accepted.) *Note: Entrant's Portion of Total Construction (budgeted and actual) are not engineering fees. They are the total of the construction costs related to the work the firm provided. For example, if the total construction cost is \$10M and the firm did 100% of the work, the entrant's portion would be \$10M. If the firm did 80% of the work, the entrant's portion would be \$8M.*

PROJECT DESCRIPTION

Five page maximum, 8.5" x 11", one-inch side margins (additional pages will be removed prior to the judging) addressing the criteria listed below. Project title, category, and firm name should be shown on each page. Do not include a title page. No QR codes or embedded links are permitted in any portion of the submittal. Entrants may use text (minimum 12 pt), photos, graphs, etc., but must follow the headings in this order:

- 01** Role of the entrant's firm in the project
- 02** Role of other consultants participating in the project
- 03** Brief description of the entrant's contribution to the project addressing each of the following judging criteria:
 - Uniqueness and/or innovative application of new or existing techniques
 - Future value to the engineering or surveying profession and enhanced public awareness/enthusiasm of the role of engineering or surveying
 - Social, economic, and sustainable development considerations
 - Complexity
 - Successful fulfillment of client/owner needs



ENTRY REQUIREMENTS (CONTINUED)

- PROJECT PHOTOGRAPHS OR GRAPHICS**
Include a minimum of four and a maximum of six color photos or graphics, 3600 x 2400 px, 300 ppi (landscape format). Photo 1 will be considered your best overall image and will be used in the awards brochure. Photos 1, 2, 3, and 4 will be used in the presentation at the gala.
- PHOTO CAPTIONS**
Caption in 500 characters or less (including spaces) for every photo or graphic submitted.
- PROJECT PANEL**
Project panel in both jpg and pdf formats.
- PRESENTATION SCRIPT**
Project description in 100 words or less (excluding project title and firm name). Do not include acronyms. **This will be read aloud at the gala.** *(Tip: You may find it beneficial to have someone read aloud for clarity).*
- BROCHURE TEXT**
Project description in 50 words or less (excluding project title and firm name) for inclusion in the awards brochure.
- AWARD INFORMATION**
Include the project name (**identical to the name used on the Official Entry Form, strictly limited to 45 characters**), owner name, and firm name(s) on different lines. *Two awards will be provided; one for the owner and one for the firm submitting. Additional awards may be purchased after the gala.*



ENTRY REQUIREMENTS (CONTINUED)



FILE NAMES AND FORMATS

Files should be named as shown in the format requested. Your firm's name should be at the beginning of every file name. If you have more than one entry, include the entry number at the end of your firm's name on every file (Firm Name1_).

Firm Name_Entry Form.pdf

Firm Name_Project Description.pdf

Project photographs or graphics saved as .jpg files Only one version of each image is needed: 3600 x 2400 px, 300 ppi (landscape format), and numbered in the order you would like them to be used as shown below. Photo 1 will be used in the awards brochure and should be your best photo. Captions must be uploaded separately with each file.

Firm Name_Photo 1.jpg Firm Name_Photo 2.jpg Firm Name_Photo 3.jpg
Firm Name_Photo 4.jpg Firm Name_Photo 5.jpg Firm Name_Photo 6.jpg

Firm Name_Project Panel.jpg (RGB format, 3000 x 3000 px, 300 ppi)

Firm Name_Project Panel.pdf (High resolution)

Firm Name_Presentation Script.docx

Firm Name_Brochure Text.docx

Firm Name_Award Information.docx

Firm Name_Logo.eps (Horizontal format preferred. Transparent .eps files preferred, but .png or .jpg RGB format at least 4" wide, 300 dpi is acceptable)



ENTRY FEE

Checks for the remaining entry fee (less intent to enter deposit) should be made payable to ACEC/Michigan and delivered with your project panel or mailed to 530 W. Ionia Street, Suite D, Lansing, MI 48933. Checks are preferred, however, credit card payments can be made [online](#).



PROJECT PANEL PRINTING AND DROP-OFF



DROP-OFF LOCATION

Project panels must be received at the ACEC/Michigan office, located at 530 W. Ionia, Suite D, Lansing, MI 48933, by **noon on September 18, 2026**.



LOCAL PRINT AND DELIVERY

If you prefer, **Minuteman Press in Lansing can print and mount your project panel on foamcore for \$50 and deliver it to ACEC/Michigan**. The deadline for print-ready artwork submission is September 9, 2026. To order, contact the printer directly.

E-mail: mi202@minutemanpress.com

Phone: 517.323.7777

Website: <https://minuteman.com/us/locations/mi/lansing/>



JUDGING PROCESS

Judging is conducted by an independent panel of judges. There are separate judges for the engineering and surveying entries. Qualified judges are selected to ensure each category is professionally represented.

The awards given are:

- Eminent Conceptor (Eligible for ACEC national competition)
- Honorable Conceptor (Eligible for ACEC national competition)
- Merit
- Board Design Award for the panel that tells the story of the project in the most visually appealing way

RATING GUIDELINES	ENGINEERING	SURVEYING
Uniqueness and/or innovative application of new or existing techniques	20%	20%
Future value to engineering or surveying profession and enhanced public awareness/enthusiasm of the role of the engineer	20%	20%
Social, economic, and sustainable development considerations	20%	20%
Complexity	20%	20%
Successful fulfillment of owner's needs	20%	20%
TOTAL	100%	100%



WHO CAN ANSWER YOUR QUESTIONS?

Visit acecmi.org for information on frequently asked questions, judging prompts, and to view previous award-winning projects. For any questions that arise during the planning and preparation of your ESE award entry, please contact the ACEC/Michigan office at 517.332.2066 or info@acecmi.org. Any committee member is also available to answer questions prior to submittal. Contact information for committee members is provided below.

Allison Cummings - Clark Dietz, Inc. | 517.253.0518 | Allison.Cummings@ClarkDietz.com
 Jean Fisher - Fishbeck | 616.464.3866 | jfisher@fishbeck.com
 Matthew Norko - Abonmarche | 269.381.6170 | mnorko@abonmarche.com
 Jamie Piercy - PCIA | 810.224.5258 | jpiercy@pciaonline.com
 Lauren Roller - HED | 248.233.0085 | lroller@hed.design
 Rob Sedlak - OHM Advisors | 248.751.3100 | robert.sedlak@ohm-advisors.com
 Wendy Sherrill - Wade Trim | 734.947.9700 | wsherrill@wadetrim.com
 Guy Stickler - ROWE Professional Services Company | 989.772.2138 | gstickler@rowepsc.com
 Joel Vandall - Wade Trim | 734.947.9700 | jvandall@wadetrim.com